

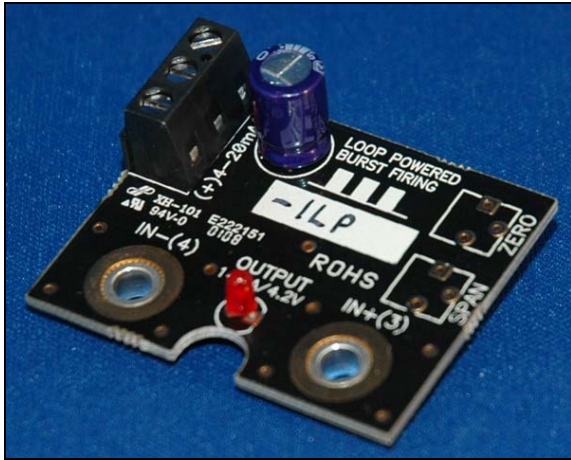


ANACON POWER & CONTROLS

Relay Assembly Specialists
An Anacon Electronic Sales, Inc. Company

2254 Main St. Concord, MA 01742-3829 - TEL: 800-466-9080 - 978-287-0715 - FAX: 978-287-0952
www.anaconpower.com - email: sales@anaconusa.com

4-20mA Loop Powered Time Proportioning Module



The APCMAN-1LP is designed for use in a broad range of 4 to 20mA power control applications where an external power supply is not available. The APCMAN-1LP mounts directly on the input connections of a Solid State Relay (SSR) and provides precise 0-100% time proportioned drive based on the input signal.

Standard Features:

- Provides precise time proportioned 0-100% output
- Loop powered - no external power supply required
- 4-20mA command signal input
- Drops only 6.3 Volts of total loop voltage
- Drives multiple Solid State Relays (SSRs)
- Single phase and three phase control
- Installs in seconds - mounts on SSR input terminals
- LED output indicator
- Limited Two Year Warranty

SPECIFICATIONS

PART NUMBER	COMMAND INPUT	CONTROL OUTPUT	CYCLE TIME	OUTPUT LINEARITY
APCMAN-1LP	4-20mA	<ul style="list-style-type: none"> • Provides 0-100% time proportioning based on command signal input • 14mA / 4.2V drive • Control output is short protected, direct acting 	<ul style="list-style-type: none"> • 350mS at 50% output • Cycle time greater at ends for optimal resolution 	+/-2% of Full Scale (+/-1% with -ZS) See User Manual for ZS Options.

DIMENSIONS

